

Field Test

FIELD-TESTING SOFTWARE & MODULES

Installation and operation manual



January 2016

How to get copies of OpDAQ technical publications:

53, St-Germain Ouest
Rimouski, Québec
Canada G5L 4B4
Telephone : 418 727-5753
Fax : 418 725-3554
Email : Info@opdaq.com

For information on all aspects of the OpDAQ Systems ship-board instrumentation systems and associated services, visit our World Wide Web site: <http://www.opdaq.com>

LIMITED WARRANTY

Please record the date of purchase and serial numbers of the purchased [OpDAQ Systems Inc.](#) Products:

Name and address of purchaser:	_____
Date of Purchase:	_____
Model of product:	_____
Serial number of product:	_____

ONE YEAR LIMITED WARRANTY

[OpDAQ Systems Inc.](#) warrants solely to the original purchaser of the Products for a period of (1) one year after the date of delivery, the Products to be free from defective material and workmanship under normal use, and that its products will conform to specifications and standards published by [OpDAQ Systems Inc.](#). Notwithstanding the foregoing, [OpDAQ Systems Inc.](#) retains its right to deviate from published specifications due to latest improvements in function and design of the Product. The foregoing warranty is subject to proper storage, transportation and use of the Products, and does not include defects due to normal wear and tear or deterioration. Upon delivery, Customer shall immediately inspect the Products for conformity and visible defects. Customer shall give [OpDAQ Systems Inc.](#) immediate written notice of any conformities or visible defects regarding the Products and contact [OpDAQ Systems Inc.](#) in writing concerning return or repair, as the case may be.

[OpDAQ Systems Inc.](#)'s sole obligation under this warranty is, upon evaluation by [OpDAQ Systems Inc.](#), and at [OpDAQ Systems Inc.](#)'s option, to repair or correct any defect or to replace or exchange the Product with a copy of the original invoice to [OpDAQ Systems Inc.](#) at its own cost. Any repaired, corrected, replaced or exchanged Products shall be subject to the warranty and limitations set forth. If [OpDAQ Systems Inc.](#) has received notification from Customer, and no defects of the Product could be found, Customer shall bear the costs that [OpDAQ Systems Inc.](#) incurred as a result of notice.

DISCLAIMER OF IMPLIED WARRANTIES

This warranty set forth is exclusive and in lieu of all other warranties (whether expressed or implied), rights or conditions and Customer acknowledges that except for such limited warranty the Products are provided "as is". [OpDAQ Systems Inc.](#) specifically disclaims, without limitation, all other warranties of any kind including any implied warranties of merchantability and fitness for a particular purpose or use. Handling of this Product is to be as stated in the Installation and Operating Instructions of this manual. In no event shall [OpDAQ Systems Inc.](#) be liable for any special, indirect, incidental or consequential damages or loss, whether in contract, tort, or otherwise, even if advised of the possibility of such damages. Some states and provinces do not allow limitation of implied warranties or the exclusion of incidental or consequential damages so the above limitations or exclusions may not apply to you. This warranty gives you specific legal rights and you may have other rights which vary from state to state or province to province.

TABLE OF CONTENT

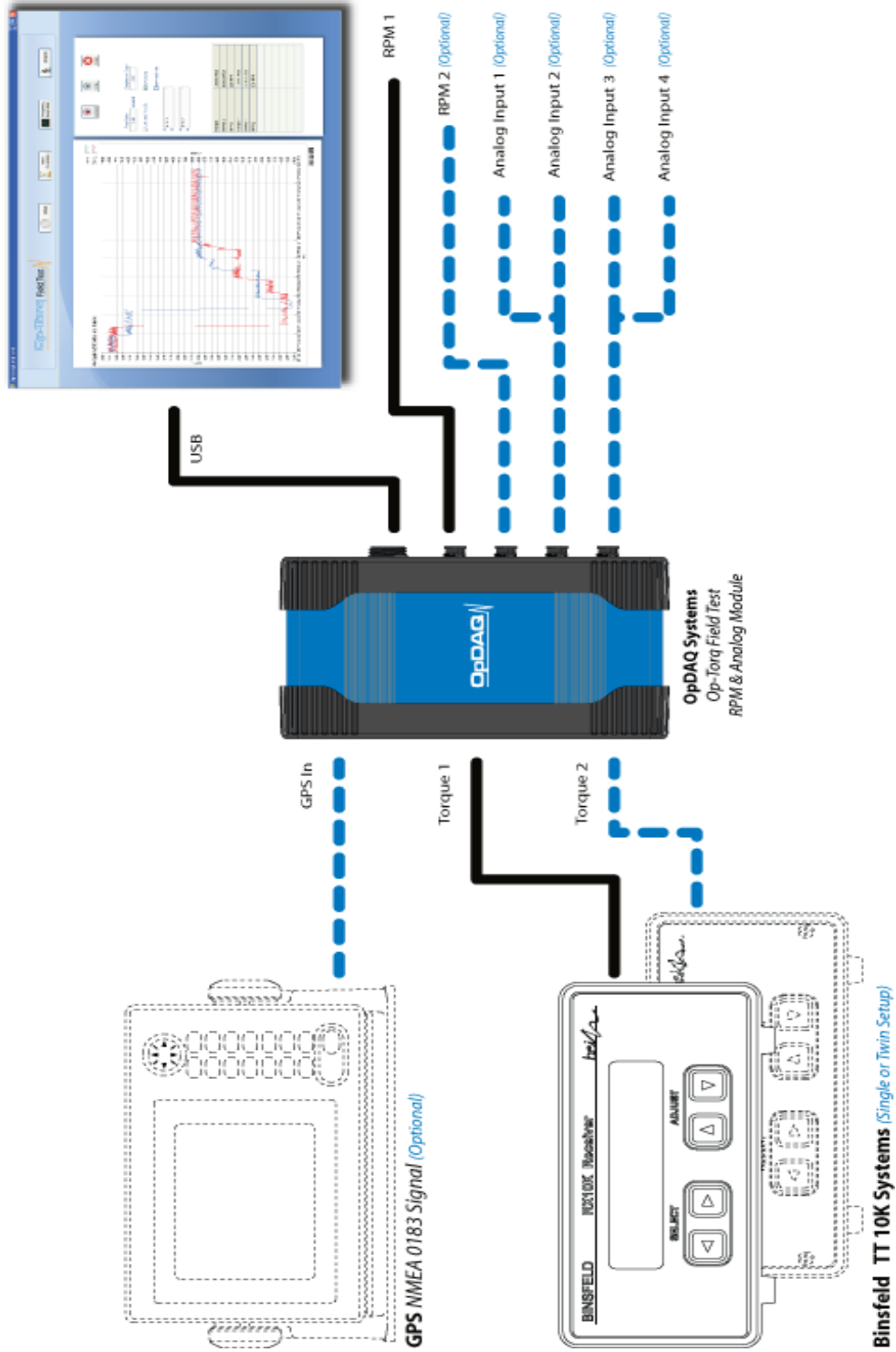
SYSTEM OVERVIEW	5
SCOPE OF DELIVERY	7
OPTIONAL MODULES	8
GPS	8
Analog Sensors	8
Torque Trak Revolution Channel	8
Power Meter	8
Expander Module	8
SOFTWARE INSTALLATION	9
System Requirements	9
Installation procedure	9
HARDWARE INSTALLATION	11
FIELD TEST SOFTWARE	12
Setting up the system	13
Timed Acquisition	15
High Frequency Acquisition	16
Analysis	18
Load	18
Export	19
Report	19
Graphical Tools	20
Graph Palette	20
Scale Adjustment	21

SYSTEM OVERVIEW

The Field Test 2 system is built to work in conjunction with Binsfeld Engineering's *TorqueTrak 10K* and *TorqueTrak Revolution* measurement instruments. The acquisition module is capable of monitoring up to four engines for continuous or temporary measurement.

Field Test is a specialized data acquisition system designed for processing, recording, displaying and analysing torque and RPM. Other than torque and RPM, the acquisition module can also integrate a series of other instruments using analog input (4-20 mA) for example: pressure, temperature, humidity and wind speed. For maritime use and sea trial, a RS-232 GPS connexion is also available as an option.





Field Test configuration possibilities

SCOPE OF DELIVERY

Acquisition Module

The acquisition module is the center part of the Field Test system. It converts the signal received from the torquemeters and the RPM pick-up sensors. As an option, the acquisition module can integrate up to four analog sensors (p. ex. electrical power meters) and GPS signal.

USB Cable

The USB cable serves to transfer information from the acquisition module to the computer where the Field Test Software has been installed.

RPM Pickup Cable

A 30 feet RPM pickup cable is included with the Field Test system. The end of the cable with the pickup sensor is to be mounted on the adjustable magnetic base (included in the package). The other end goes into the acquisition module.

Magnetic base

The magnetic base is used to fix the RPM pickup as close as possible to the shaft for RPM measurement.

Magnets

Two powerful magnets are included with the package. A magnet is to be placed on the rotating shaft close to the magnetic pickup sensor for shaft speed measurement readings. The second magnet is a spare.

12 VDC Splitter

The 12 VDC splitter serves to power the Binsfeld RX10K receiver and the Field Test acquisition module (the blue box). One branch of the 12 VDC Splitter goes into the TorqueTrak RX10K Receiver. The second branch goes into the Field Test acquisition module. The two remaining branches serve for more complex assembly arrangements. The splitter power end is used to receive power from a 110-220VAC/12VDC wall plug transformer from the Binsfeld system.

Field Test Software

The Field Test software needs to be installed on a PC / Laptop (not included) running on Windows XP or Windows 7. The software allows a simple and straight forward data display from the TorqueTrak series and all other integrated instruments.

Installation and Operational Manual

The Op-Torq Field Test Installation and operational manual provides information about the Acquisition Module and the analysis software. For information about the TorqueTrak 10K and TorqueTrak Revolution please refer to the provided Binsfeld Engineering manuals.

OPTIONAL MODULES

GPS

Field Test allows GPS connection to get speed over ground or ship speed. With the GPS option, a GPS receiver is included with the system.

Analog Sensors

To record environmental variables or other needed information during the monitoring process, up to four analog instruments can be integrated into the Field Test such as: relative humidity, temperature, anemometer and pressure. The selected instruments must communicate using a 4-20mA signal.

NOTE: Choosing analog sensor options provides communication channel integration into the acquisition module and does not include the monitoring instruments.

Torque Trak Revolution Channel

The Field Test acquisition module can also integrate a TorqueTrak Revolution instrument in order to monitor torque, power and RPM over long periods of time. Long term acquisition is not possible with the torquemeter TT10K because it is battery operated.

NOTE: When ordering Field Test with TorqueTrak Revolution channel(s), scope of delivery does not include: RPM Pickup Cable, Magnetic base, Magnets or serial cable.

Electrical Power Meter

To integrate electrical power and power factor monitoring, a power meter channel can be integrated into the acquisition module. With the current option, the power meter is included with the system.

Expander Module

The expander module consists of a second acquisition module to monitor more than two engine(s) / genset(s), up to a maximum of four. It allows the integration of two extra torquemeters and RPM pickups.

SOFTWARE INSTALLATION

The current section presents the computer requirements and installation procedure of the Field Test Software.

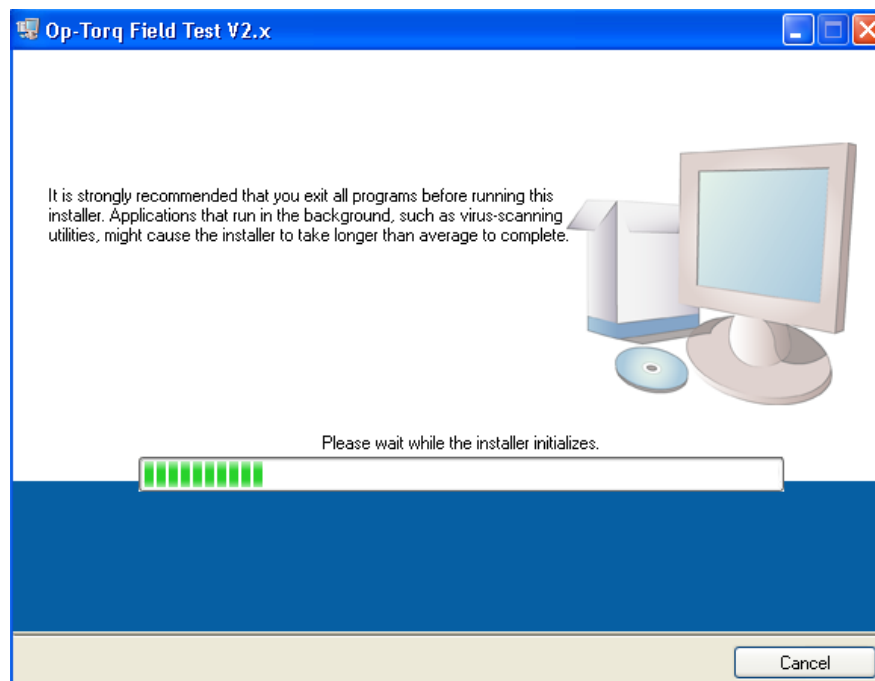
System Requirements

The Field Test Software must be installed on a PC or Laptop that uses a Microsoft Windows operating system (Windows XP or Windows 7). This software is optimized for 1024 x 768 screen resolution.

Installation procedure

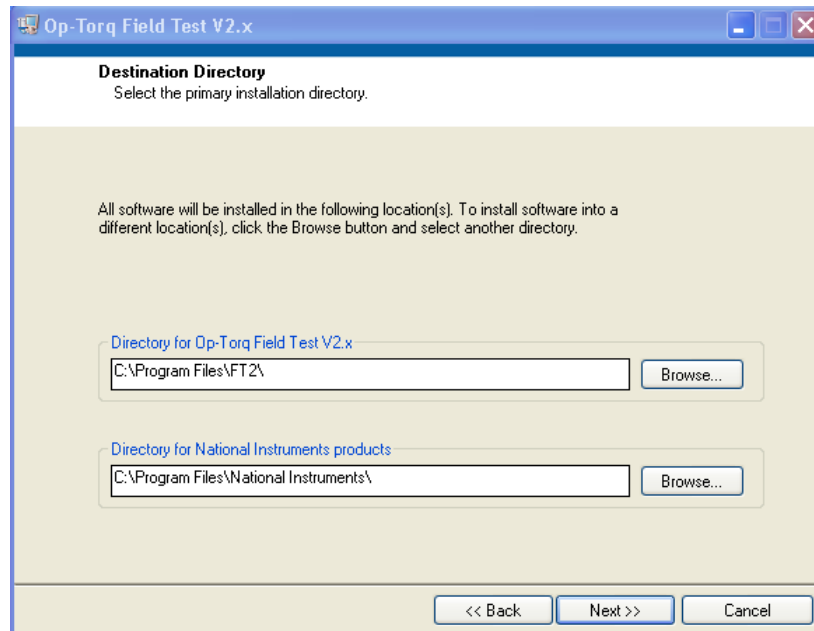
Insert the Field Test Software CD into the computer disc drive.

- a) Run the setup.exe program from the Field Test installer folder on the disc. The following window will appear:

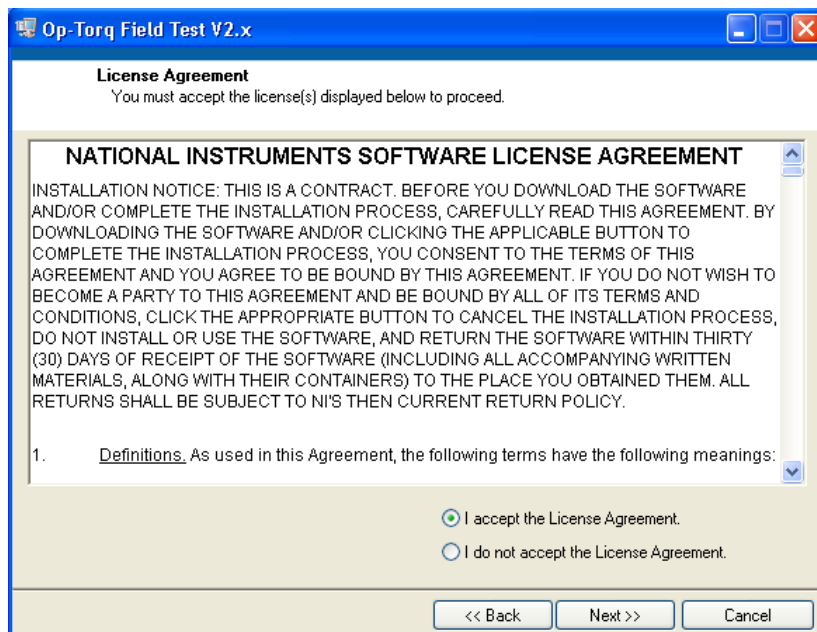


NOTE: At any time during installation you can press CANCEL to stop the installation process.

- b) Once the initialization is completed, the following destination directory window will appear; keep the default folder or choose another destination folder and push the NEXT button.



- c) The following license agreement window will appear, to continue the setup; it is required to ACCEPT the terms.



- d) Once the Licence Agreement is accepted, the start Installation window will appear; push the NEXT button to begin the installation.

- e) Once the installation is completed, push the FINISH button. The software is now ready to run on the computer. A shortcut has been created in the Start Menu.

HARDWARE INSTALLATION

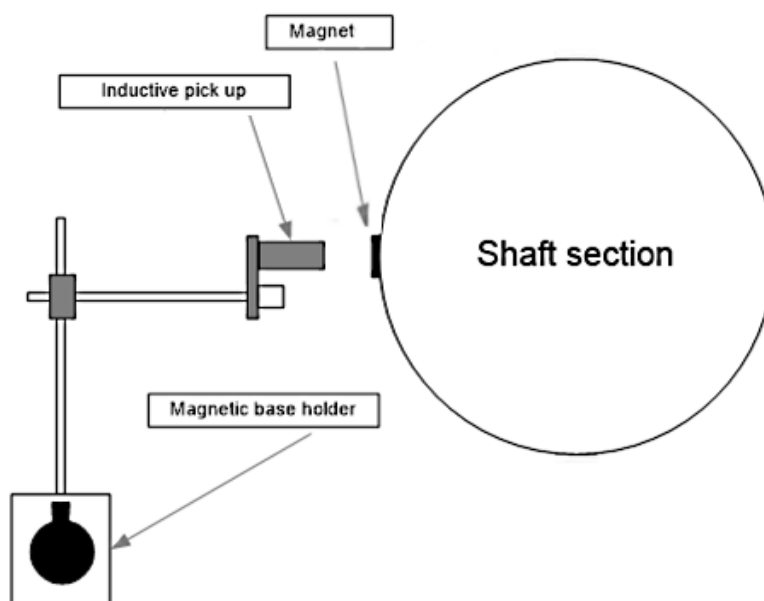
After successfully completing the installation of the Field Test Software and driver, you can begin the hardware installation as follows.

NOTE: When ordering Field Test with the TorqueTrak Revolution channel, skip installation procedure steps B, C, D, E and F

- A. Install the torque meter as explained in Binsfeld User's Guide provided with the instruments.

NOTE: Do not power up the instruments at this point.

- B. Install one magnet per shaft for RPM measurement. Secure the magnet on the shaft using fibre tape supplied with the torque meter instrument.
- C. Install the RPM pickup on the magnetic Base. See the diagram below for reference.
- D. Position the magnetic Base, with the RPM pickup, in line with the magnet, perpendicularly to the shaft, as shown below. The gap between the inductive pick up and the magnet needs to be of less than an inch (25 mm).
- E. Connect the RPM pickup into the acquisition module.
- F. Connect the serial cable from the Binsfeld system between the TorqueTrak RX10K receiver and the acquisition module.



- G. Connect the first of the four branches of the 12VDC Splitter into the TorqueTrak RX10K. Connect the second branch of the 12VDC Splitter into the acquisition module.
- H. Connect the wall plug transformer from the Binsfeld system into the power end of the 12VDC Splitter.

NOTE: Do not power up the instruments at this point.

- I. Connect the USB Cable from the acquisition module to the computer.
- J. Launch the Field Test Software. See chapter 4 for the Software installation procedure.
- K. Power up the instrument(s).

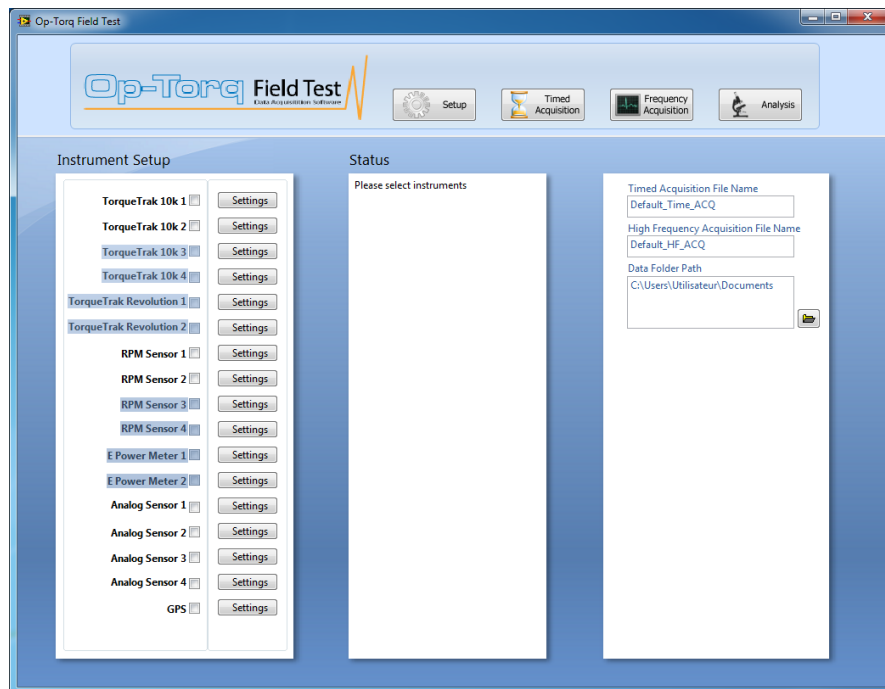
NOTE: If the instrument(s) is powered up prior to connecting the USB cable from the acquisition module to the computer, Windows may detect it as a serial mouse. In this event, unplug the USB Cable from the computer USB port. Power off the instruments and plug the USB Cable to the USB port. Wait five seconds. Power up the torquemeter(s). If the instruments are not detected automatically by the Field Test Software, refer to chapter 6.1.2 COMMUNICATION STATUS.

- L. Setup the Field Test Software according to the instrument configuration and calibration, see chapter 6.1 SETUP.

FIELD TEST SOFTWARE

Before launching the Field Test Software, make sure that both end of the USB Cable are connected to the acquisition module and to the computer. A correct communication signal will show a USB orange signal status light on the acquisition module.

When starting the Field Test Software, the SETUP screen below will appear. This screen is used to setup the system and adjust calibration. The Field Test Software main navigation screens are: SETUP, TIMED ACQUISITION, FREQUENCY ACQUISITION and ANALYSIS, use the access button located in the upper window.



On the SETUP screen, the STATUS box shows the status of all selected instruments. This is a valuable indicator to diagnose a connection or a calibration problem.

The LED status lights on the acquisition module provide another way to verify correct communication between the instruments and the acquisition module. A green status light shows that data is being received from the instruments. As for RPM signals, The RPM input status lights will blink each time the acquisition module receives a pulsed signal from the RPM sensors.

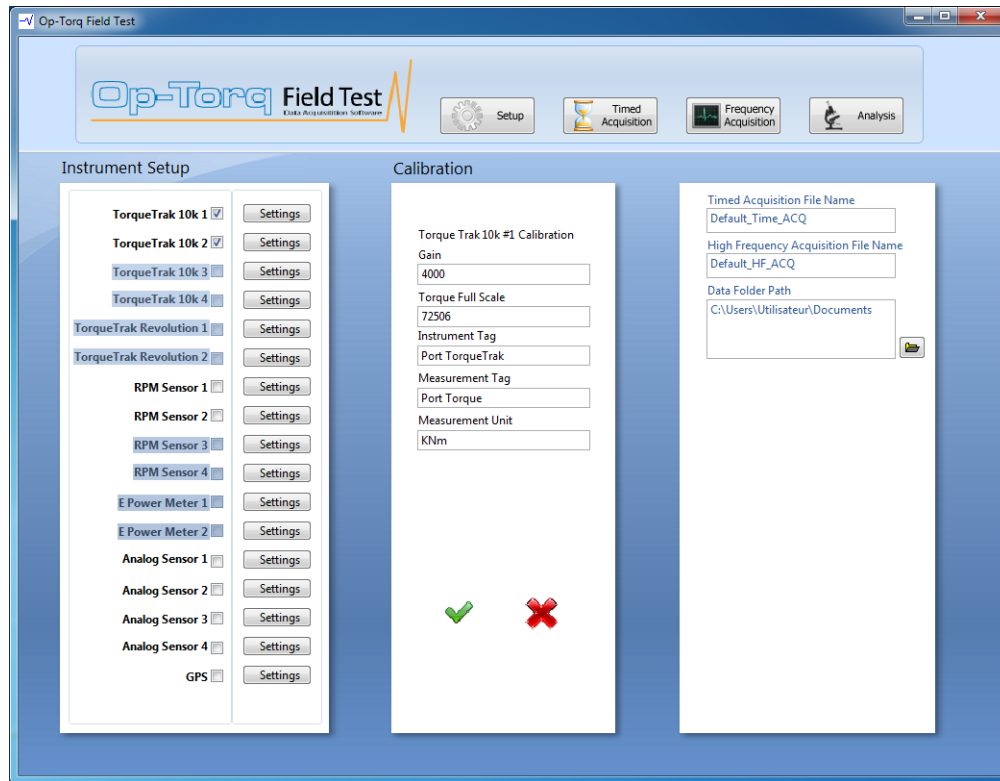
If the Field Test Software auto-recognized the instrument but no data is received verify:

- the serial connection between the acquisition module and the TT10k and GPS.
- that the correct signal is connected between the acquisition module and the TorqueTrak Revolution and Analog Inputs.

Setting up the system

On the left side of the SETUP screen, the INSTRUMENT SETUP box shows the readings of all auto-recognized instruments. The INSTRUMENT SETUP box allows the user to choose and configure all instruments independently. By pressing SETTINGS on the right of the check-marked instrument, the STATUS box at the center of the screen will be replaced by CALIBRATION. From the CALIBRATION box enter values according to the instrument manufacturer's instructions. When you are done, you must press the ACCEPT or CANCEL button to validate calibration. To ensure proper measurement follow up calibration values will be shown in the data files header.

NOTE: Highlighted instruments in the INSTRUMENT SETUP box are not programmed for application.



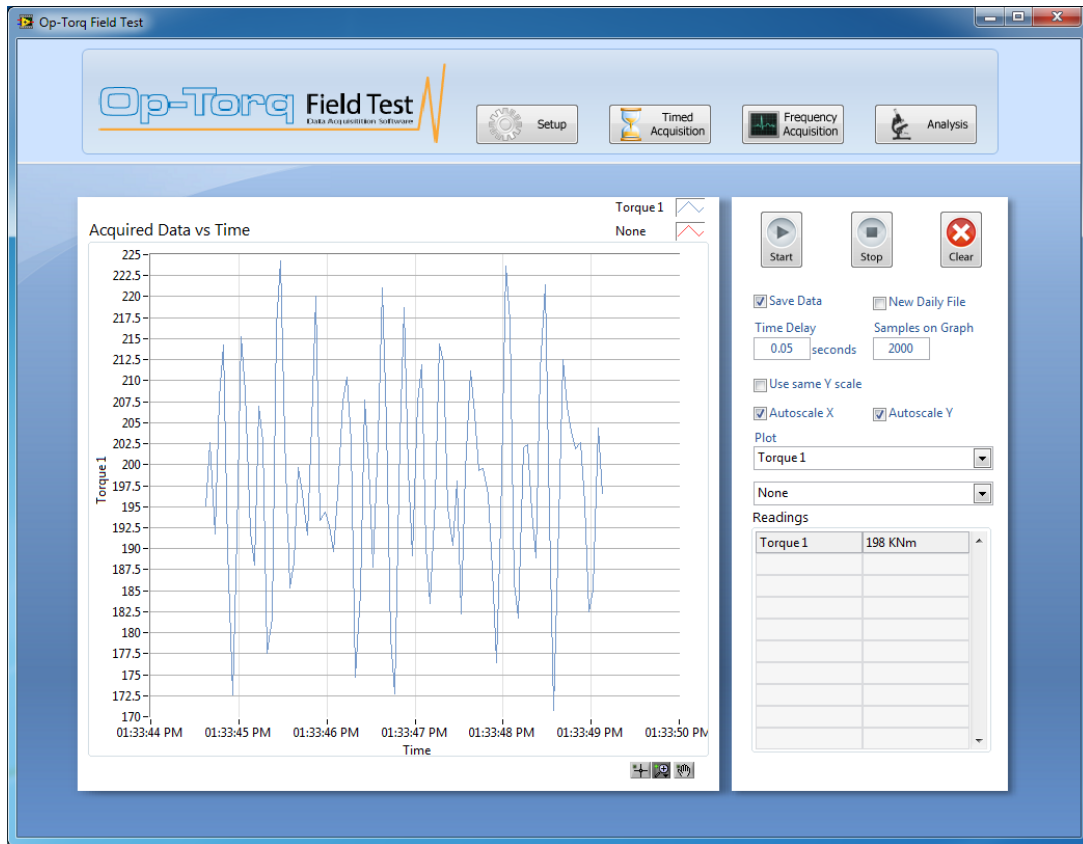
On the right side of the screen, enter the target name and folder where you want to save acquisition files on your computer. The file names are incremented as to prevent overwriting.

NOTE: The following characters are not supported in the file names:

. : ? | / \ < > * “

Timed Acquisition

The TIMED ACQUISITION screen is used for data acquisition of up to 20 samples per second. The screen is divided into two parts : a control panel and a graph display.



Start / Stop Data Acquisition

The START / STOP buttons are used to start and end data acquisition.

Clear

The CLEAR button is used to clear the graph display from all previously recorded files. This will have no impact on the acquired data.

Time Delay

The TIME DELAY box is used to set-up the sampling rate. A 0.05 SECOND value “20Hz” is the default value from the TIMED ACQUISITION mode which means that data acquisition will be performed 20 times per second. To reduce the sampling, as an example, to 5 acquisitions per second instead of 0.05, enter 0.20.

Samples on Graph

The SAMPLE ON GRAPH box allows the user to adjust the number of data points plotted on the graph display. As an example, having 1000 samples on graph with a 0.05 time delay, the graph display will show 50 seconds of recorded data

NOTE: After entering a new value in this field, the user must hit ENTER on the keyboard in order to activate the modification.

Use same Y scale

In the TIMED ACQUISITION screen with the Dual TorqueTrak configuration, the user can check the USE SAME Y SCALE box to set both scales together.

Save data

If the SAVE DATA box is checked, data will be logged and saved into a file every time the START button is pushed. If the box is not checked, the data is only displayed on the graph displays without creating any recorded files.

New daily file

The NEW DAILY FILE button is used when the acquisition is performed over a long period of time. By checking this box, the Field Test will create a new daily file at midnight every day.

The PLOT

PLOT selection menu is used to select the data to be shown on the graph display. The number of menus is adjusted according to the number of output channels from the Acquisition Module.

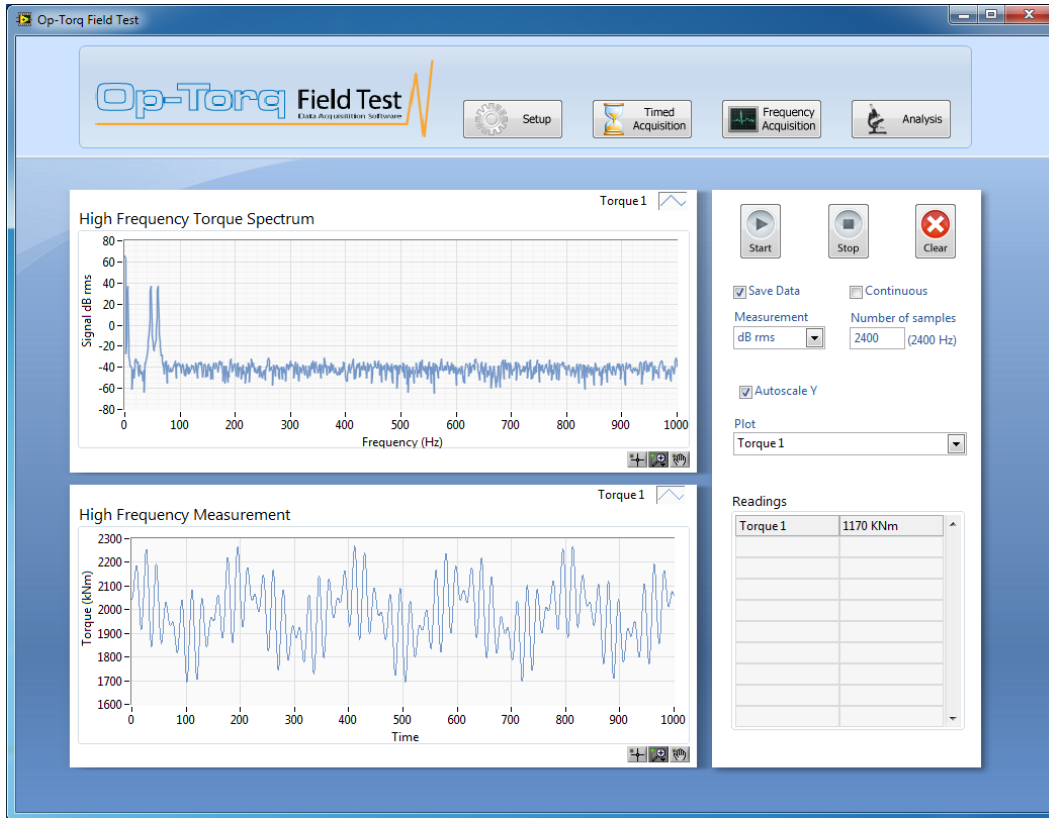
READINGS

The READINGS box displays the recorded values in real time. All check marked instruments in the SETUP screen are shown in this table.

NOTE: If the shaft rotation is stopped suddenly, the RPM value may remain at its last value for 10 seconds.

High Frequency Acquisition

The High FREQUENCY ACQUISITION screen is particularly designed to be used for torsional vibration analysis.



Start / Stop data acquisition

The START / STOP buttons are used to begin and end data acquisition.

Clear

The CLEAR button is used to clear the graph display from all previously recorded files.

Save data

If the SAVE DATA box is checked, data will be logged and saved into a file every time the START button is pushed. If the box is not checked, the data is only displayed on the graph displays without creating any recorded files.

Samples

The SAMPLES box sets up the number of samples logged per second. (2400 being the default value) The sampling rate is fixed at 2 400 per second. Increasing this number over 2400 increases the duration, but keeps the same sampling rate. The maximum number of samples is fixed at 24 000 which represents 10 seconds of data at 2400 samples per second.

Continuous

When the CONTINUOUS box is checked, high frequency acquisition will run continuously. The graph display will update in intervals depending on the number of samples. Each acquisition has the same duration. For example, by checking CONTINUOUS with samples at 4800, the Field Test Software will update the graph display every two seconds until the STOP button is pushed.

Measurement

The MEASUREMENT box allows the user to display the Torque FFT spectrum in dB RMS or torque RMS values. The peaks are the frequencies where the torque component vibrations occur. dB RMS is referenced to 1kNm.

Plot

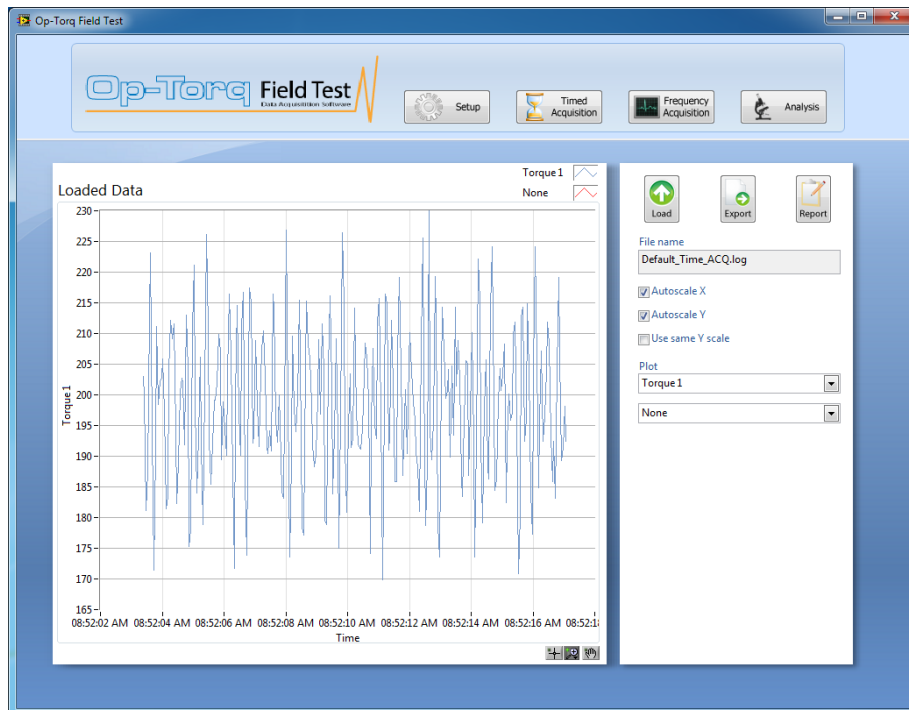
The PLOT selection menu is used to select the data to be shown on the graph display. The number of menus is adjusted according to the number of output channels from the acquisition module.

Readings

The READINGS box displays the average value per period of time from 1 to 10 seconds depending on the number of SAMPLES (from 2 400 to 24 000). All check marked instruments in the in the SETUP screen are shown in this table.

Analysis

The ANALYSIS screen allows the user to load and export data that was previously saved, see the next diagram.



Load

To display saved data, from the ANALYSIS screen, use the LOAD button. A window will prompt the user to select the data acquisition file. After clicking OK, the selected saved data will be displayed on the graph. You can use the Graph palette to zoom on the graph. For more information concerning the graph palette, refer to chapter 7.

Export

The user can export data files to .xls format. The exported files can be opened directly using MS Excel software for further analysis. To proceed, the user needs to locate the file locations on the computer and open them using MS Excel. File locations were previously allocated on the SETUP screen from the DATA FOLDER PATH box.

The user can also export a graph image to a clipboard to get it pasted in software such as MS Word or to an image file. To get graph display copied to clipboard, follow these steps:

- Right click on the graph displays
- In the right click menu, choose EXPORT SIMPLIFIED IMAGE...
- A window will then appear, the user can choose the image format (Bitmap, Encapsulated Postscript or Enhanced Metafile)
- Choose EXPORT TO CLIPBOARD or SAVE TO FILE.
 - If EXPORT TO CLIPBOARD is selected, the user can paste the image into software such as MS Word.
 - If SAVE TO FILE is selected, an image file will be created.

Report

The REPORT button allows the user to produce a PDF report containing graphical analysis, comments and reference pictures in a standard and easy to share format. To produce a PDF report, click REPORT and the following screen will appear. This window allows the user to enter specific information to be included in the report. By checking the SET AS DEFAULT box, report information will be saved for the next report.

Report Information

Report Title

Report Date
24/08/2011

Name on report

Customer Reference / Ship Name

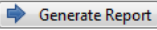

Engine type

Fuel Type

Image Title

Import Image File

Comments

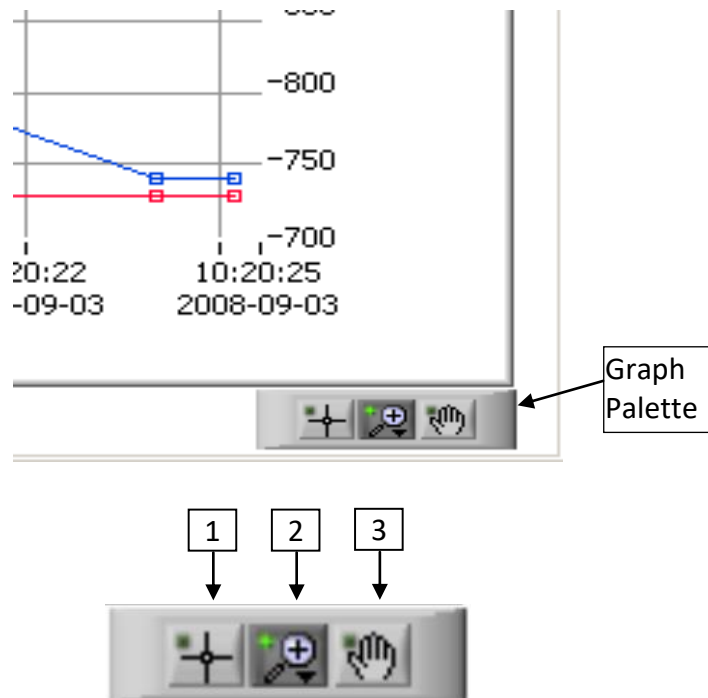
Set as default  

After completing the fields, click GENERATE REPORT. The user will be prompted to select a target file name and then the PDF report will open in a separate window

Graphical Tools

Graph Palette

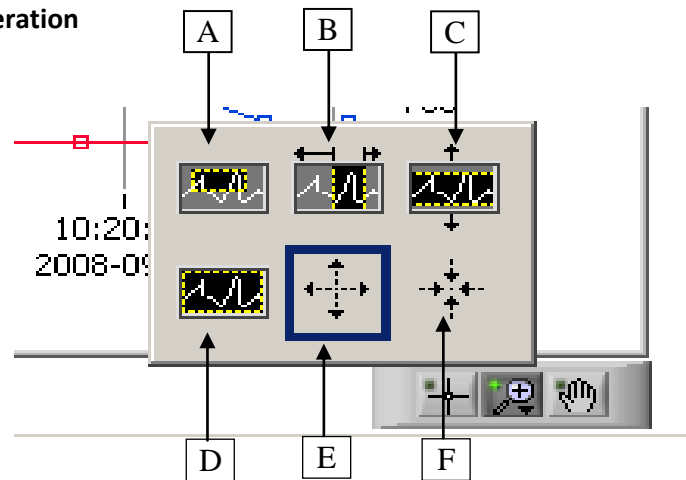
The graph palette located on the lower right side of every graph is used to zoom or pan graph data.



Graph palette elements description

- 1. Annotation Movement Tool**
Used to move and select graph annotations
- 2. Zooming Tool**
To zoom in and out of the display
- 3. Panning Tool**
Picks up the plot and moves it around on the display

Zooming Tool Operation



Press the zooming tool button and select one of the following zooming options:

- A) **Zoom to Rectangle**—With this option, click a point on the display you want to be the corner of the zoom area and drag the tool until the rectangle covers the zoom area.
- B) **X-zoom**—Use this option to zoom in on an area of the graph along the x-axis.
- C) **Y-zoom**—Use this option to zoom in on an area of the graph along the y-axis.
- D) **Zoom to Fit**—Use this option to autoscale all x- and y-scales on the graph to return to the original display
- E) **Zoom In about Point**—With this option, click a point you want to zoom in on. Press and hold the <Shift> key to switch between Zoom In about Point and Zoom Out about Point.
- F) **Zoom Out about Point**—With this option, click a point you want to zoom out from.

Scale Adjustment

The X and Y scales of the Graph displays are adjustable manually or automatically. The default setting is in Autoscale mode, which means that the scale is continuously adjusting itself to optimize the resolution.

To readjust the scale to specific minimum and maximum values follow these steps:

- Right click on the scale, and unselect the AUTOSCALE function in the menu.
- Double left click on the minimum or maximum value of the scale.
- Modify it to the desired value.
- Press Enter, then the scale readjusts with the user selected value.